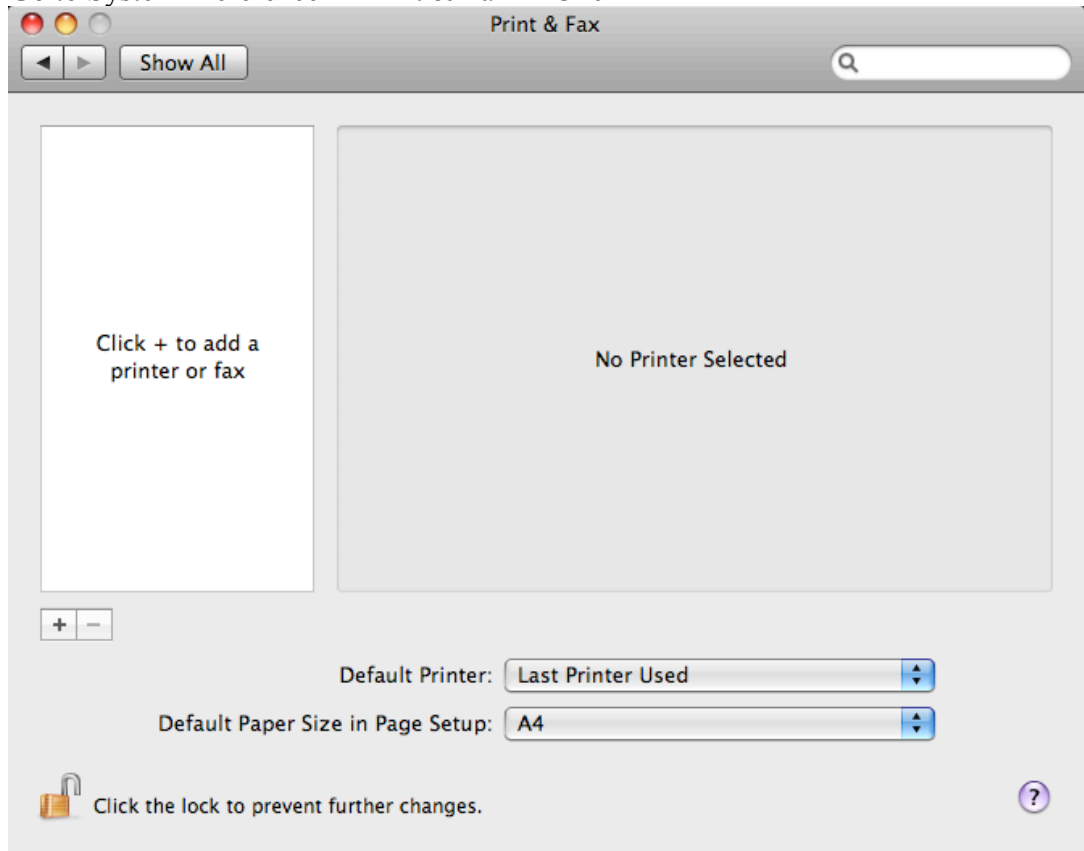
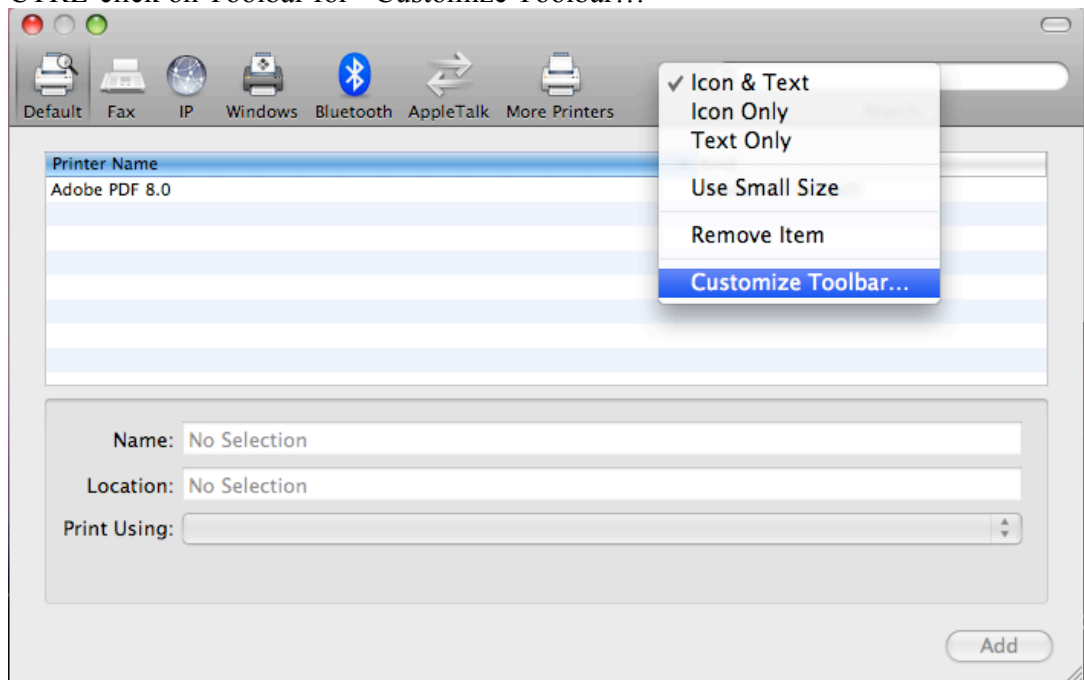


Printing To Network Printer in NUS(SoC) using Mac OS X 10.5 Leopard

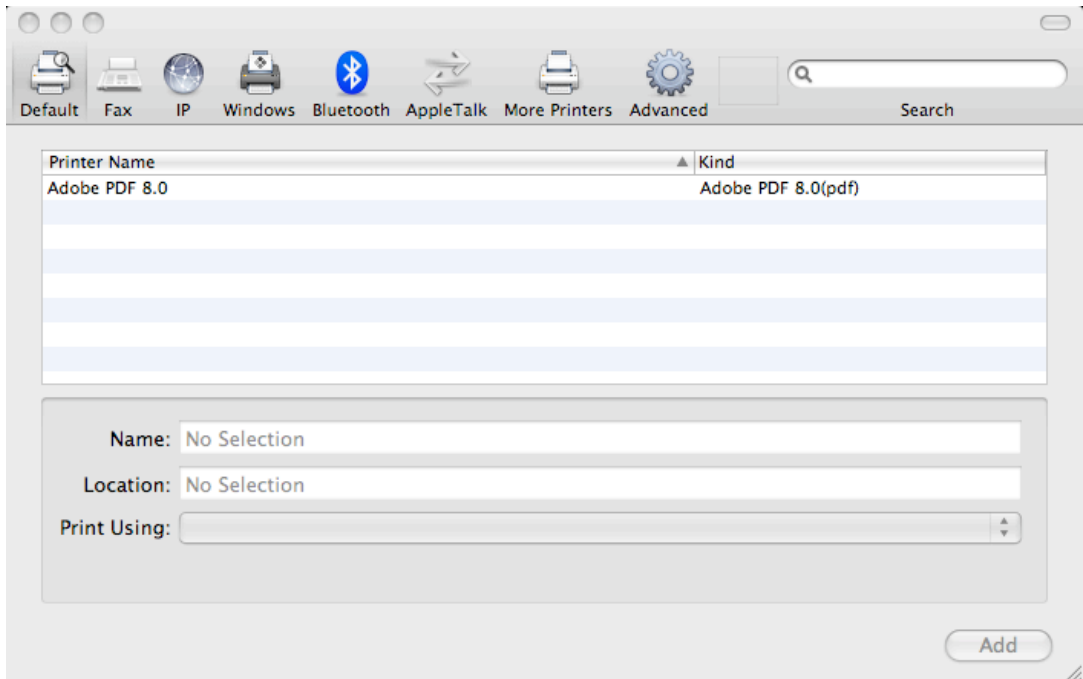
1. Go to System Preference -> Print & Fax -> Click <+>



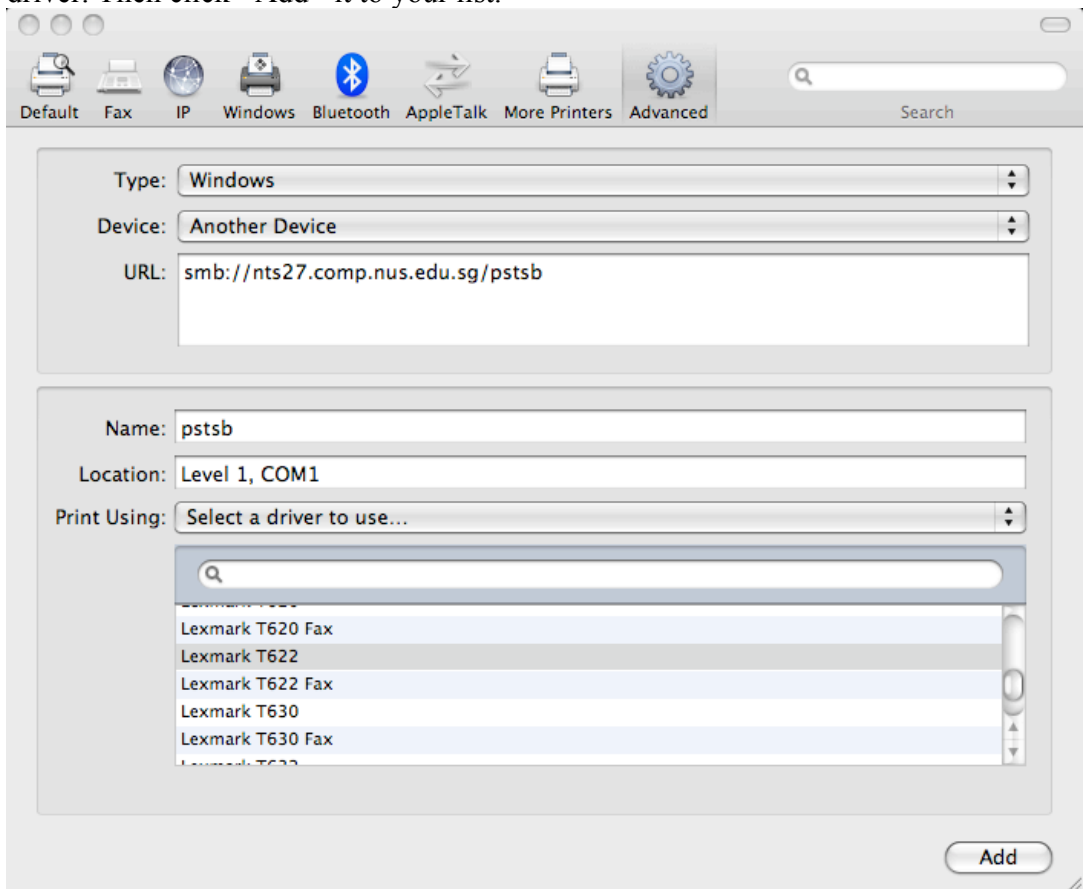
2. CTRL-click on Toolbar for <Customize Toolbar...>



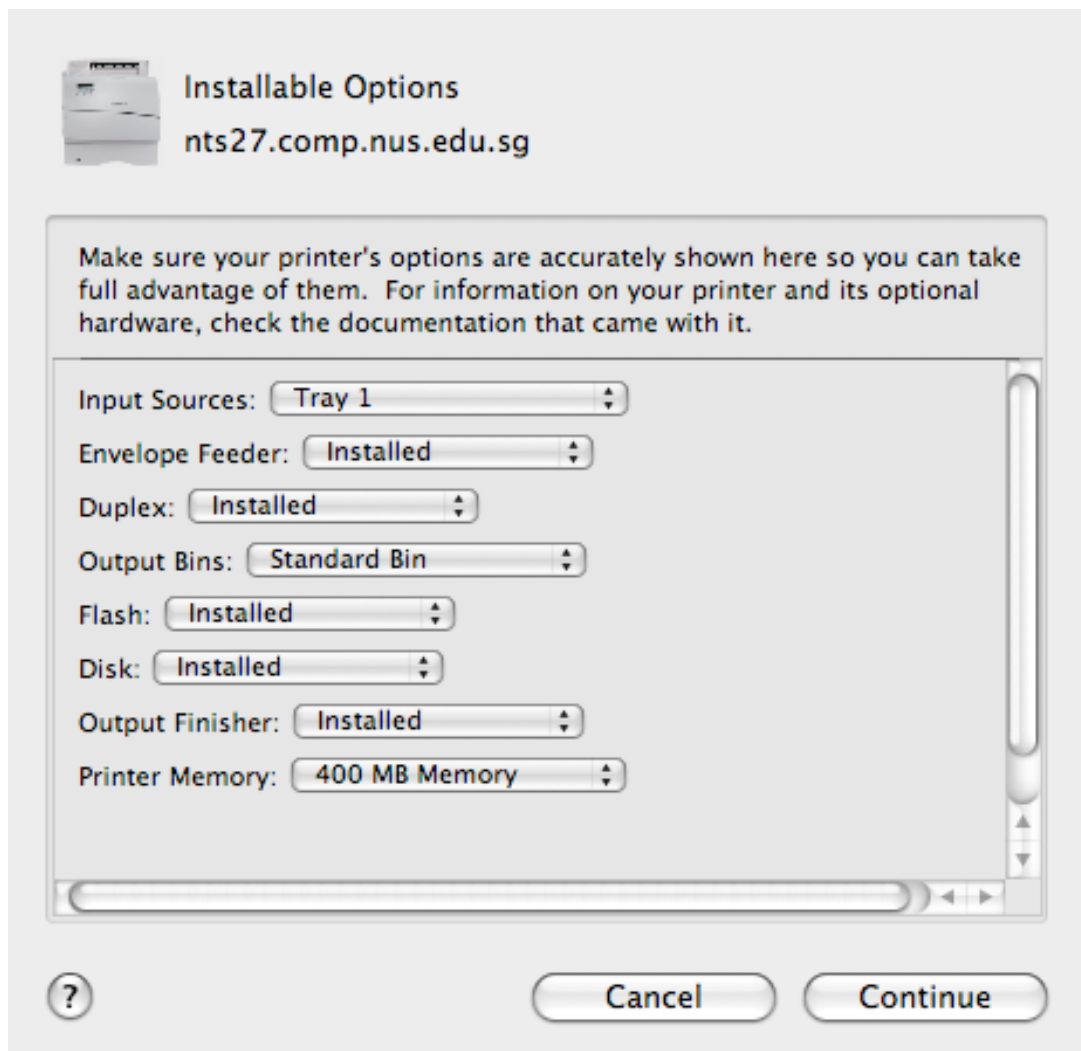
3. Add Advanced to the toolbar menu, click done then click on Advanced



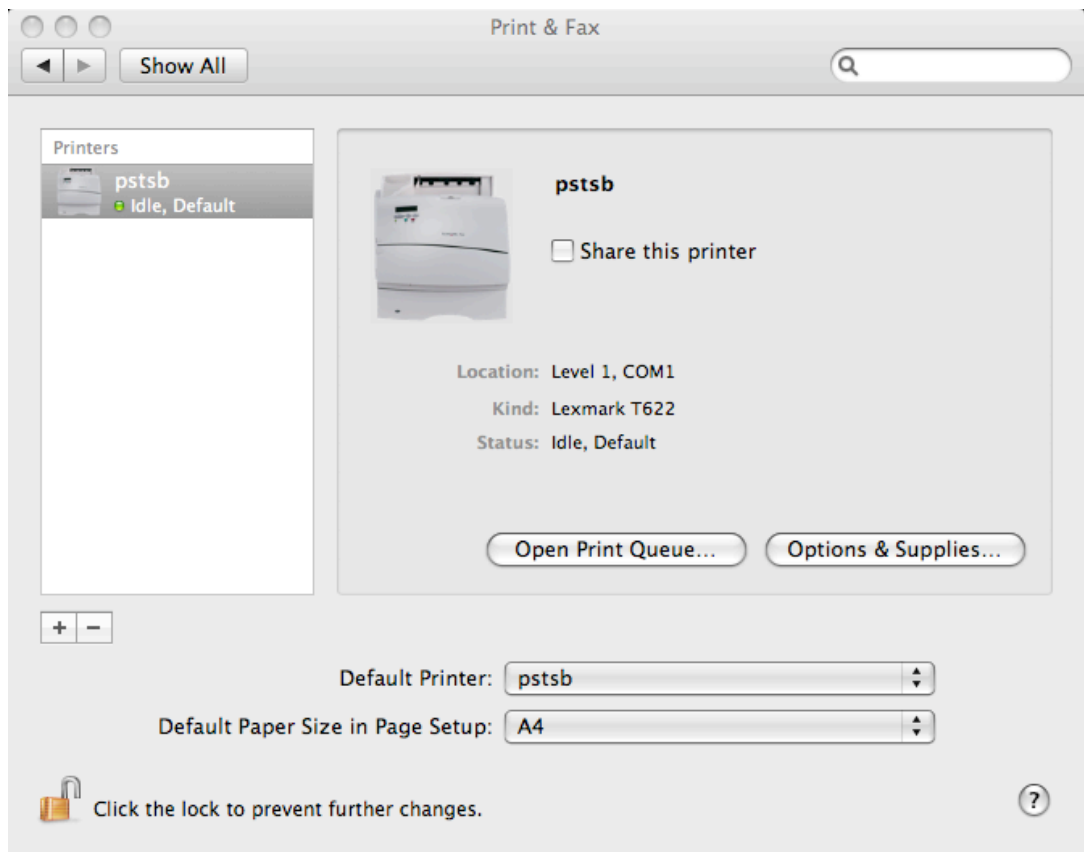
4. Enter the fields as shown for your desired printer, name and choose the correct driver. Then click <Add> it to your list.



5. Select the appropriate settings. You may have to do this by trial and error to get the correct setting and click on <Continue>.



6. You will see the newly added printer in your <Print & Fax> window.



7. You are ready to print. When prompted, enter your userid and password and click <OK>

